



15,000lt NON-TRAFFICABLE - RW15STD

Lifting Instructions

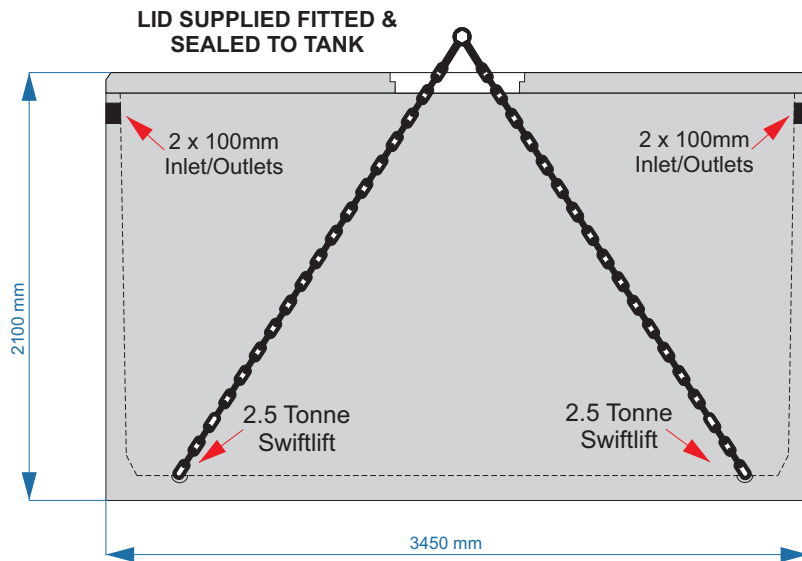
Mass Weight = 9.4 Tonne

Tank = 7.4 Tonne

Lid = 2.0 Tonne

Total Height = 2100mm

Total Width = 3450mm

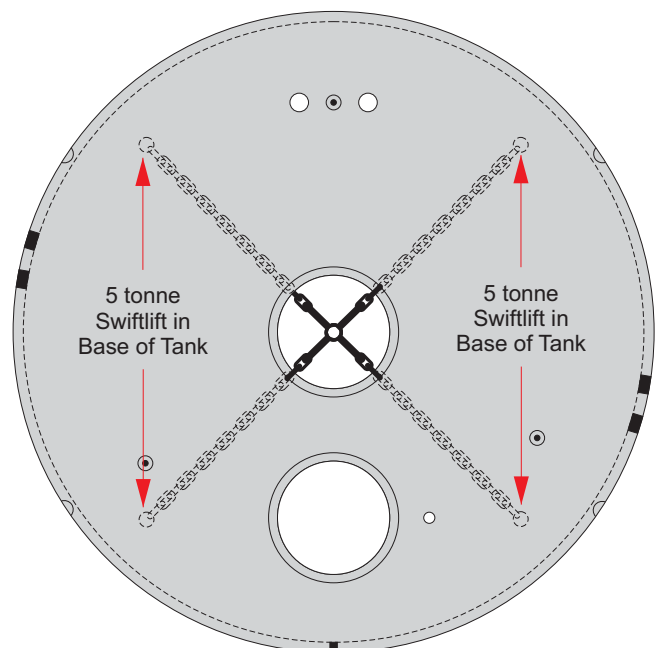


TANK SIDE VIEW

1. Always use certified lifting equipment
2. The tank has 4 x 2.5 tonne swiftlifts on the inside of the tank for lifting
3. The Lid has 3 x 2.5 tonne swiftlifts for the separate lifting of the lid if required
4. Always ensure the tank is empty before lifting

REACH OF CRANE/ CRANE TRUCK

To be determined by your crane/ crane truck operator.



LID TOP VIEW



15,000lt NON-TRAFFICABLE - RW15STD Excavation Instructions

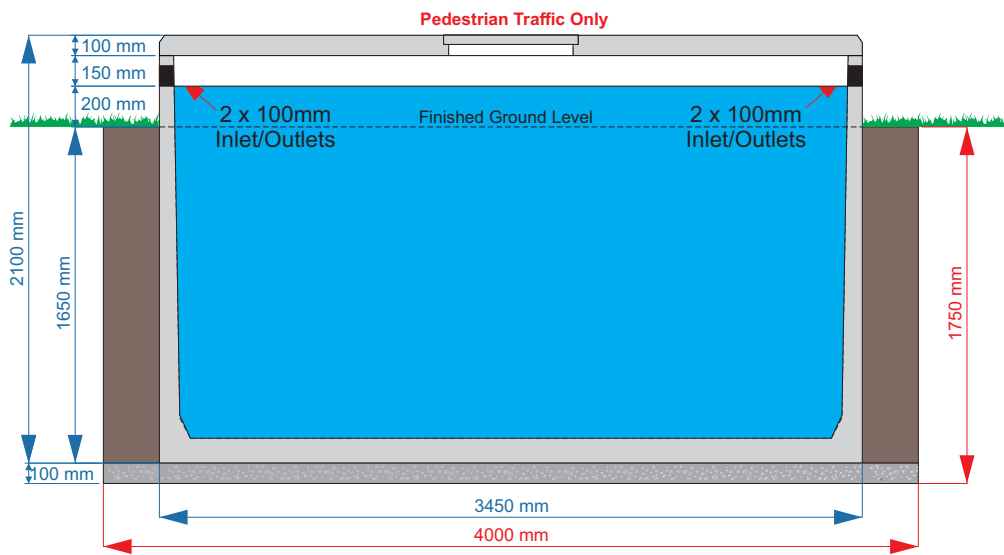
Mass Weight = 9.4 Tonne

Tank = 7.4 Tonne

Lid = 2.0 Tonne

Total Height = 2100mm

Total Width = 3450mm



TANK SIDE VIEW

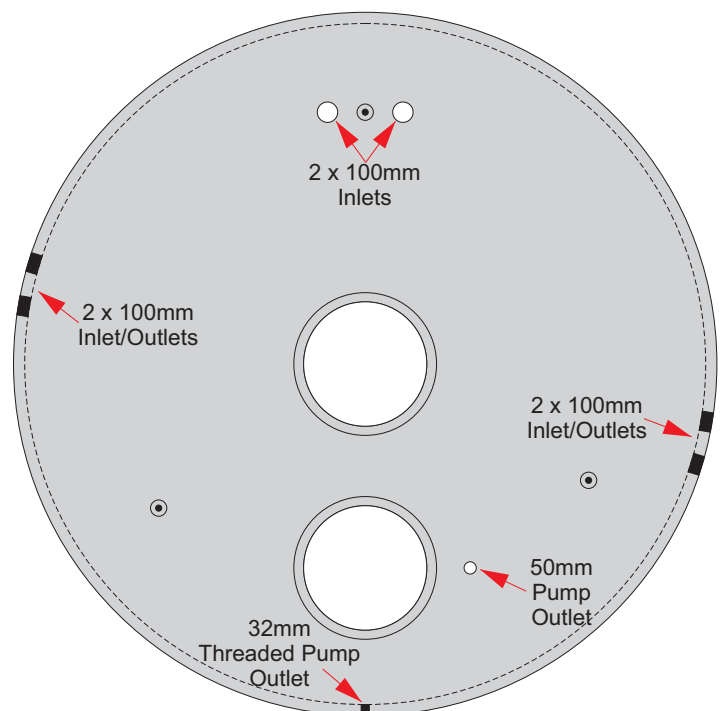
1. Dig hole 4000mm square & 1750mm Deep
2. Cover base of hole with 100mm of 5mm to 7mm drainage gravel
3. Ensure bottom of hole is level
4. Backfill with soil/sand. Avoid backfilling with large rocks
5. To prevent flotation while not connected to stormwater, the tank must be filled with 70% (10,500lt) of water immediately after installation

TRUCK ACCESS

Unloading of tank via the back of the truck
NOT SIDE. Ensure BACK of truck has clear
level 6m wide access to the edge of the hole.

REACH OF CRANE/ CRANE TRUCK

To be determined by your crane/ crane truck
operator.



LID TOP VIEW