



31,500lt NON-TRAFFICABLE - RW31STD Lifting Instructions

Mass Weight = 14.4 Tonne

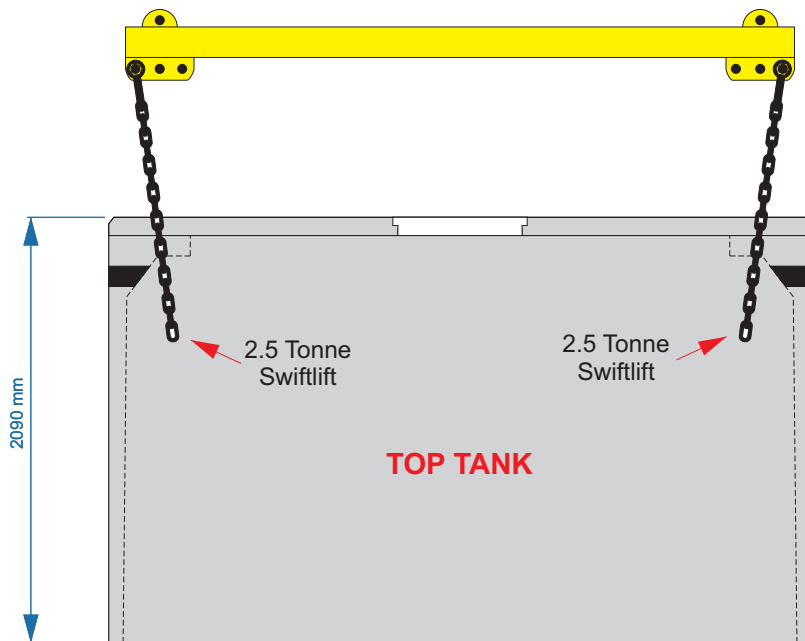
Top Tank = 5.0 Tonne

Bottom Tank = 7.2 Tonne

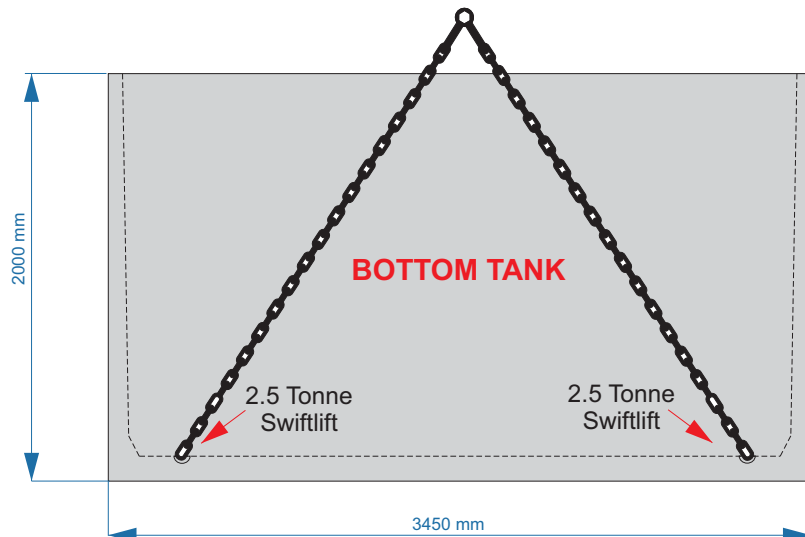
Lid = 2.2 Tonne

Total Height = 4090mm

Total Width = 3450mm



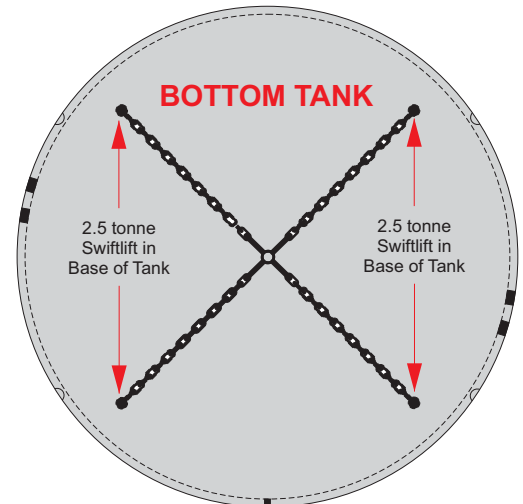
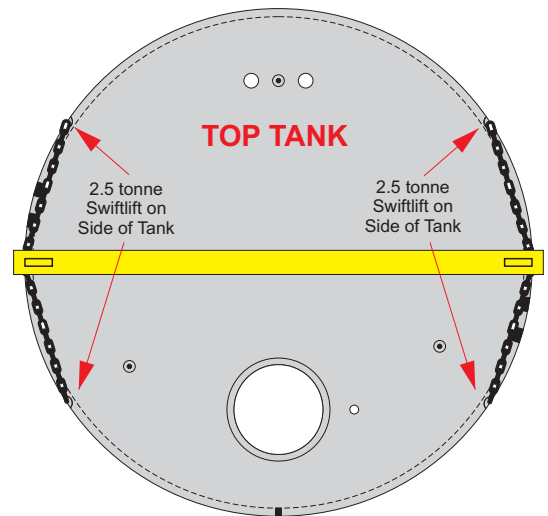
Sikaflex Join by Taylex Satff/ Contractor Only



TANK SIDE VIEW

REACH OF CRANE/ CRANE TRUCK

To be determined by your crane/ crane truck operator.



TOP VIEW

1. Always use certified lifting equipment
2. Both Tanks have 4 x 2.5 tonne swiftlifts for lifting. Top Tank located on side and Bottom Tank located in the base.
3. Always ensure the tank is empty before lifting



31,500lt NON-TRAFFICABLE - RW31STD Excavation Instructions

Mass Weight = 14.4 Tonne

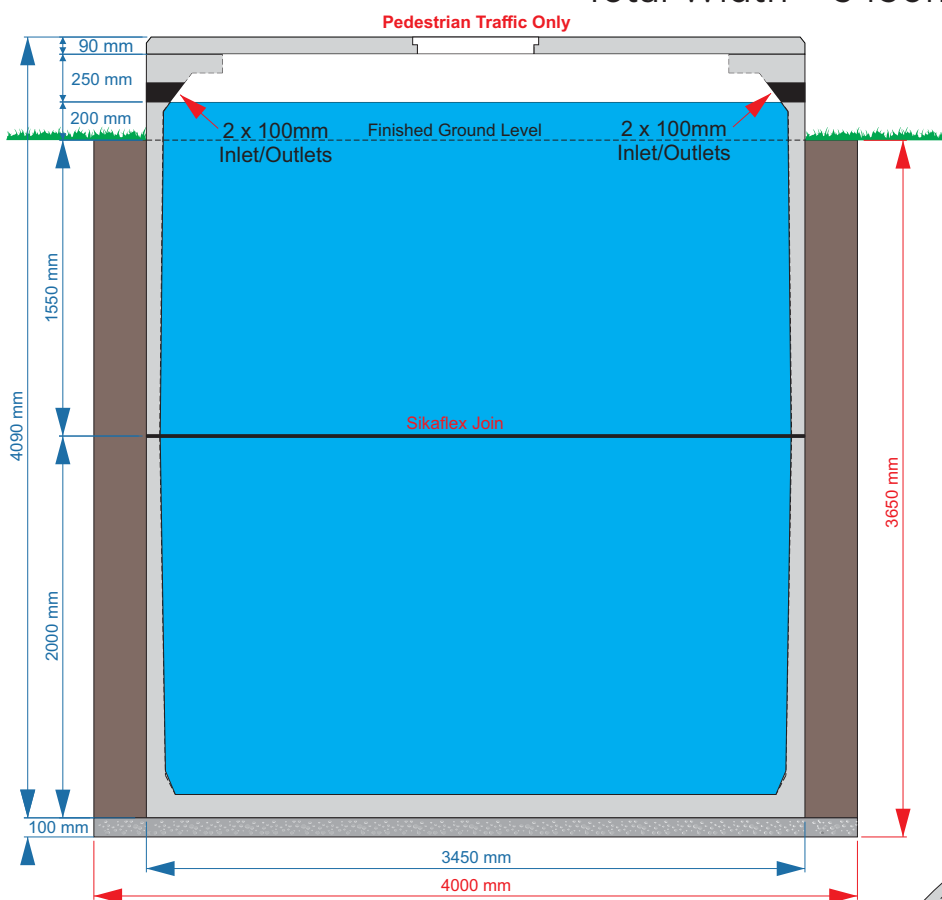
Top Tank = 5.0 Tonne

Bottom Tank = 7.2 Tonne

Lid = 2.2 Tonne

Total Height = 4090mm

Total Width = 3450mm



TANK SIDE VIEW

1. Dig hole 4000mm square & 4250mm Deep

2. Cover base of hole with 100mm of 5mm to 7mm drainage gravel

3. Ensure bottom of hole is level

4. Backfill with soil from Excavation in no more than 500mm equally distributed layers around the tank. Avoid backfilling with rocks over 300mm.

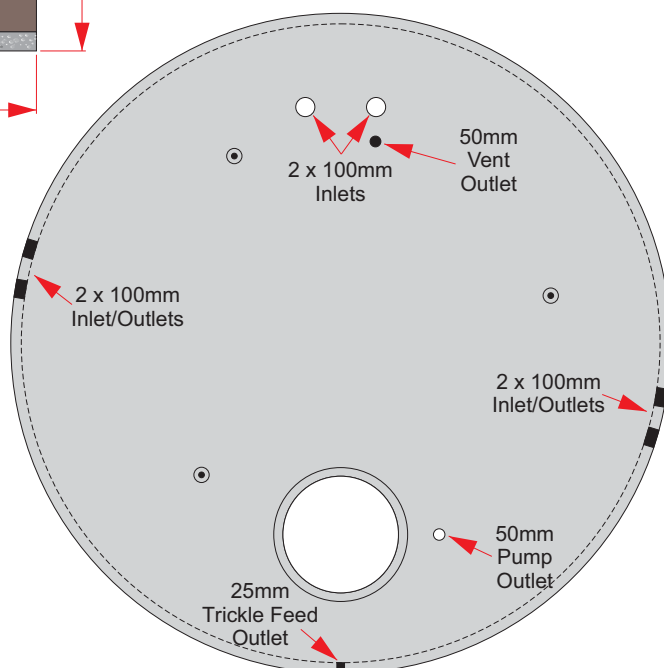
5. To prevent flotation while not connected to stormwater, the tank must be filled with 40% (12,000lt) of water on the first day. Then top up with 30% (10,000lt) after 5-7 days.

TRUCK ACCESS

Unloading of tank via the back of the truck NOT SIDE. Ensure BACK of truck has clear level 8m wide access to the edge of the hole.

REACH OF CRANE/ CRANE TRUCK

To be determined by your crane/ crane truck operator.



LID TOP VIEW